

The background of the entire image is a repeating pattern of light gray geometric shapes, specifically stylized chevrons or V-shapes, arranged in a grid-like fashion.

# City & Counties

— Commercial —

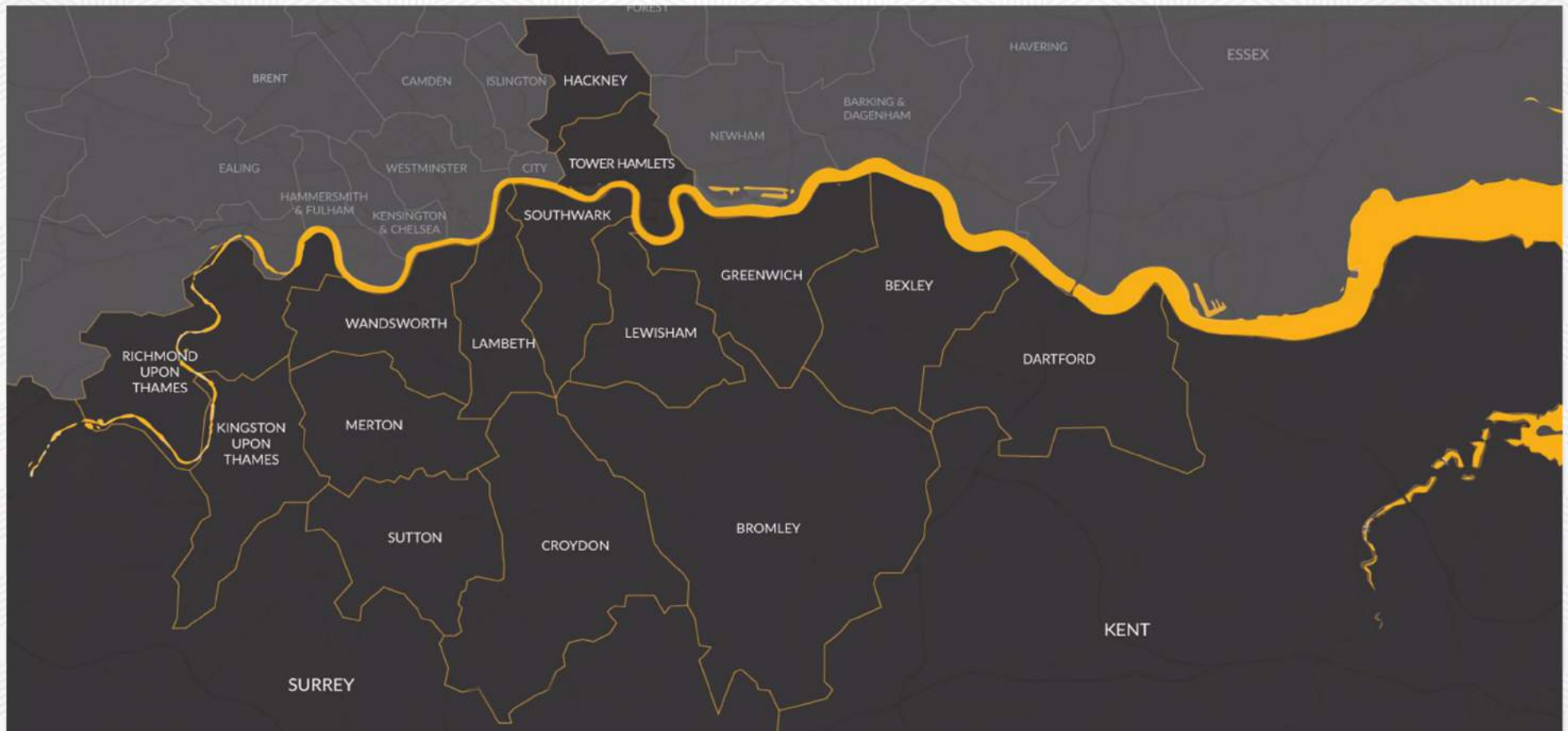


# ABOUT US

City & Counties Commercial specialise in the acquisition and disposal of development, investment and commercial property in London and the Home Counties. Our consultants advise on a wide range of property types and use classes and are experts in identifying ways in which property owners can maximise value.

Our considerable knowledge of the property market and creative approach to delivering maximum value, has enabled us to become one of the most active development consultancies in South/East London and Kent.

## FOCUS AREAS





# SOUTHWARK STREET, LONDON SE1

## LANDMARK DEVELOPMENT

Acquisition of an existing office building with the benefit of full planning permission for the development of a 16 storey mixed-used scheme.

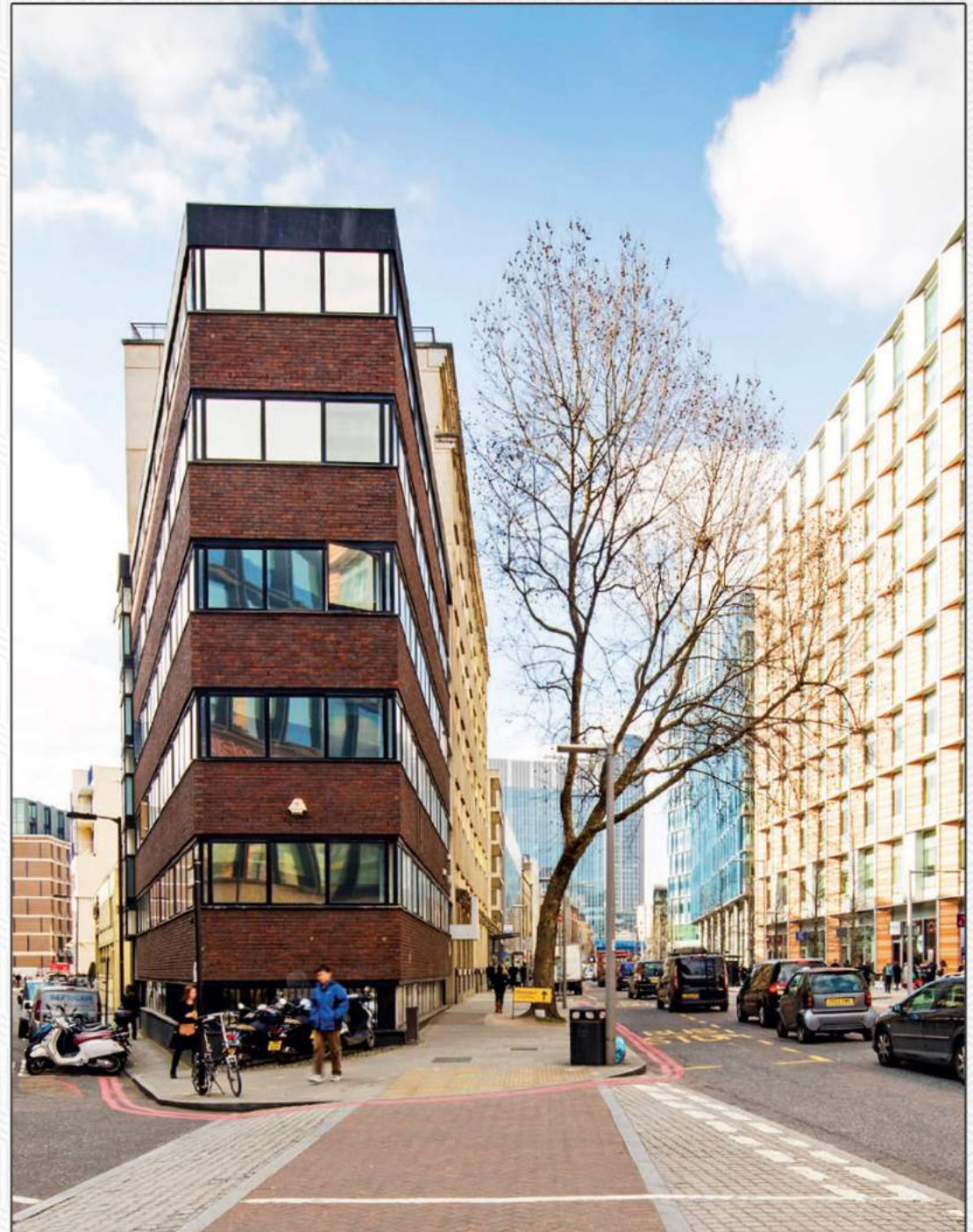
**Deal** - Acquisition of consented development site

**Scheme** - 9 x Luxury Apartments

**Borough** - London Borough of Southwark

**Existing Use** - B1 (Office)

**Project Value** - £20,000,000







## PICTON STREET, CAMBERWELL SE5

### ACQUISITION

**Scheme** - 9 x Private Apartments

**Borough** - London Borough of Southwark

**Existing Use** - A2 (Public House)

**Project Value** - £7,500,000



## MINA ROAD, PECKHAM SE17

### ACQUISITION

**Scheme** - 10 x Private Apartments

**Borough** - London Borough of Southwark

**Existing Use** - B2 (Industrial)

**Project Value** - £6,000,000





## BURLINGTON ROAD, NEW MALDEN KT3

### AFFORDABLE HOUSING ACQUISITION

Acquisition of development site on behalf of Housing Association with planning permission for 41 apartments.

**Deal** - Acquisition of consented development site

**Scheme** - 41 x Affordable Homes

**Borough** - London Borough of Merton

**Existing Use** - B2 (Industrial)

**Project Value** - £20,000,000





## DECIMA STREET, LONDON SE1

### COMMERCIAL FREEHOLD

**Scheme** - Commercial Investment

**Borough** - London Borough of Southwark

**Existing Use** - B2 (Industrial)

**Project Value** - £2,000,000



## BROWNHILL ROAD, CATFORD SE6

### DEVELOPMENT ACQUISITION

**Scheme** - 19 x Private Apartments + Retail

**Borough** - London Borough of Lewisham

**Existing Use** - B1 (Office)

**Project Value** - £8,000,000





# RATCLIFFE CROSS STREET, LONDON E1

## AFFORDABLE HOUSING ACQUISITION

Identified and delivered development opportunity for national Housing Association with planning permission for a mixed-use scheme comprising 78 apartments in the City Fringe.

**Deal** - Acquisition of consented development site

**Scheme** - 78 x Affordable Homes

**Borough** - London Borough of Tower Hamlets

**Existing Use** - B2 (Industrial)

**Project Value** - £30,000,000







## PECKHAM ROAD, PECKHAM SE5

### PETROL FILLING STATION

**Scheme** - 9 x Private Apartments

**Borough** - London Borough of Southwark

**Existing Use** - Petrol Filling Station

**Project Value** - £7,000,000



## HAYDONS ROAD, WIMBLEDON SW19

### PETROL FILLING STATION

**Scheme** - 9 x Private Apartments

**Borough** - London Borough of Merton

**Existing Use** - Petrol Filling Station

**Project Value** - £7,500,000





# HAMPDEN ROAD, KINGSTON KT1

## AFFORDABLE HOUSING ACQUISITION

Identification and acquisition of existing Public House with planning permission for 35 apartments + commercial.

**Deal** - Acquisition of consented development site

**Scheme** - 35 x Affordable Homes + Commercial

**Borough** - London Borough of Kingston

**Existing Use** - A4 (Public House)

**Project Value** - £15,000,000



# THE BEEHIVE PUBLIC HOUSE, CROYDON SE25

## AFFORDABLE HOUSING ACQUISITION

Acquisition of consented development site with planning permission for 22 apartments on behalf of Housing Association and regional contractor.

**Deal** - Acquisition of consented development site

**Scheme** - 22 x Affordable Homes

**Borough** - London Borough of Croydon

**Existing Use** - A4 (Public House)

**Project Value** - £8,000,000







## OFFLEY ROAD, OVAL SW9

### RESIDENTIAL DEVELOPMENT SITE

**Scheme** - 4 x Private Apartments + Commercial

**Borough** - London Borough of Lambeth

**Existing Use** - B2 (Industrial)

**Project Value** - £4,000,000



## ALBERT ROAD, BROMLEY SE9

### PLANNING MANAGEMENT AND ACQUISITION

**Scheme** - 10 x Private Apartments

**Borough** - London Borough of Bromley

**Existing Use** - B2 (Industrial)

**Project Value** - £4,000,000





## INGRAM ROAD, GILLINGHAM ME7

### PLANNING MANAGEMENT AND ACQUISITION

Identification and delivery of brownfield site with development potential. Planning management to deliver 22 private apartments.

**Deal** - Option Agreement

**Scheme** - 22 x Private Apartments

**Borough** - Medway

**Existing Use** - B2 (Industrial)

**Project Value** - £5,000,000



# PURLEY DOWNS ROAD, CROYDON CR8

## PLANNING MANAGEMENT AND ACQUISITION

Identification of brownfield site with potential for 37 apartments and retention of existing commercial use.

**Deal** - Option Agreement

**Scheme** - 37 Apartments + Commercial

**Borough** - London Borough of Croydon

**Existing Use** - B8 (Storage + Distribution)

**Project Value** - £15,000,000







## WHITE HORSE HILL, BROMLEY BR7

### ACQUISITION

**Scheme** - 8 x Private Apartments + 3 x Houses + Retail

**Borough** - London Borough of Bromley

**Existing Use** - A4 (Public House)

**Project Value** - £6,000,000



## CRYSTAL PALACE ROAD, DULWICH SE22

### ACQUISITION

**Scheme** - 9 x Private Apartments

**Borough** - London Borough of Southwark

**Existing Use** - B2 (Industrial)

**Project Value** - £6,000,000



# MILTON STREET, MAIDSTONE ME16

## AFFORDABLE HOUSING ACQUISITION

Delivery of consented development site with planning permission for 22 dwellings, sold to a Housing Association.

**Deal** - Acquisition of consented development site

**Scheme** - 22 x Affordable Homes

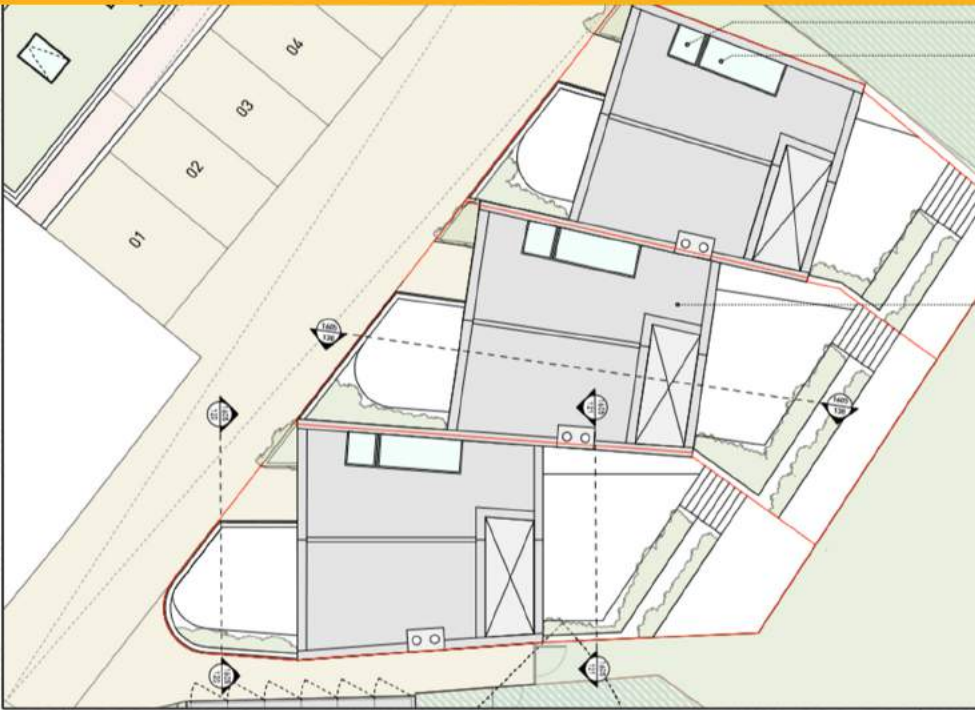
**Borough** - Maidstone

**Existing Use** - B2 (Industrial)

**Project Value** - £5,000,000







## ALMA YARD, CRYSTAL PALACE SE19

### ACQUISITION

**Scheme** - 6 x Private Apartments

**Borough** - London Borough of Bromley

**Existing Use** - B2 (Industrial)

**Project Value** - £5,000,000



## BROOMFIELD ROAD, BEXLEY DA6

### RESIDENTIAL DEVELOPMENT SITE

**Scheme** - 9 x Private Apartments

**Borough** - London Borough of Bexley

**Existing Use** - C3 (Residential)

**Project Value** - £4,000,000





## BRIXTON HILL, BRIXTON SW2

### ACQUISITION

**Scheme** - 13 x Private Apartments

**Borough** - London Borough of Lambeth

**Existing Use** - B2 (Industrial)

**Project Value** - £7,000,000



## THE CRICKETERS PUBLIC HOUSE, MITCHAM CR4

### ACQUISITION

**Scheme** - 9 x Private Apartments

**Borough** - London Borough of Merton

**Existing Use** - A4 (Public House)

**Project Value** - £4,500,000





## LANDOR ROAD, CLAPHAM SW9

### DISPOSAL

**Scheme** - 4 x Private Apartments

**Borough** - London Borough of Lambeth

**Existing Use** - A3 (Restaurant)

**Project Value** - £3,000,000



## ETHELBERT ROAD, BROMLEY BR1

### ACQUISITION

**Scheme** - 6 x Private Apartments

**Borough** - London Borough of Bromley

**Existing Use** - C3 (Residential)

**Project Value** - £3,000,000





## BOULCOTT STREET, E1

### ACQUISITION

**Scheme** – 25 x Affordable Homes + Commercial

**Borough** - London Borough of Tower Hamlets

**Project Value** - £10,000,000



## WEIGALL ROAD, SE12

### ACQUISITION

**Scheme** – 5 x Private Apartments

**Borough** - London Borough of Greenwich

**Project Value** - £2,500,000



## BURNT ASH ROAD, SE12

### ACQUISITION

**Scheme** - Commercial Investment

**Borough** - London Borough of Lewisham

**Project Value** - £700,000





## HURST ROAD, DA15

### PLANNING MANAGEMENT AND ACQUISITION

**Scheme** - 1 x Private Dwelling

**Borough** - London Borough of Bexley

**Project Value** - £600,000



## SIDCUP HIGH STREET, DA14

### INVESTMENT ACQUISITION

**Scheme** - Freehold Investment

**Borough** - London Borough of Bexley

**Project Value** - £10,000,000



## GEORGE LANE, SE13

### ACQUISITION

**Scheme** - 5 x Private Dwellings

**Borough** - London Borough of Lewisham

**Project Value** - £4,000,000





## CROXTED ROAD, SE21

### ACQUISITION

**Scheme** - 1 x Private Dwelling

**Borough** - London Borough of Southwark

**Project Value** - £750,000



## ALDWORTH GROVE, SE13

### ACQUISITION

**Scheme** - 5 x Private Dwellings

**Borough** - London Borough of Lewisham

**Project Value** - £1,500,000



## MAJENDIE ROAD, SE18

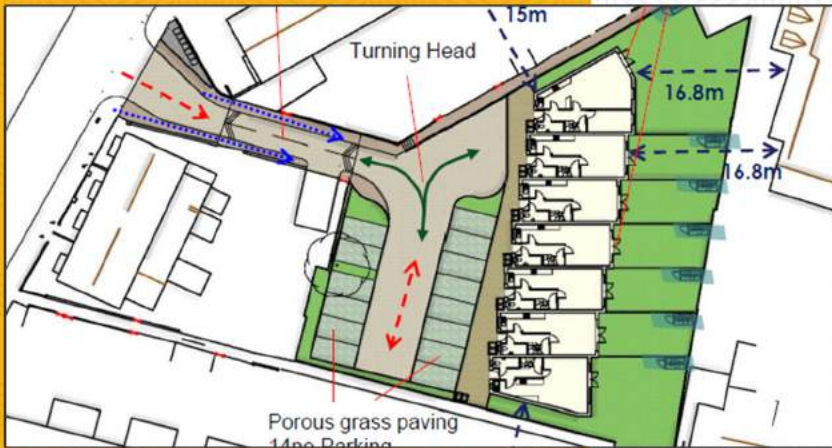
### DISPOSAL

**Scheme** - 2 x Private Dwellings

**Borough** - London Borough of Greenwich

**Project Value** - £1,000,000





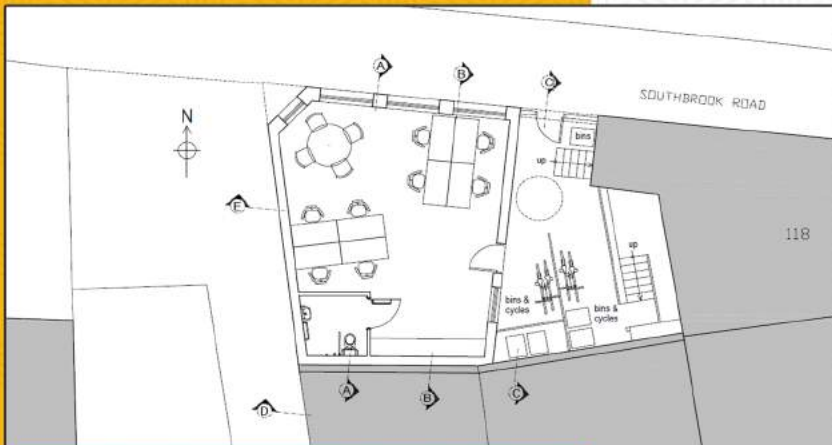
## CAMPBELL ROAD, DA11

### ACQUISITION

**Scheme** – 7 x Private Dwellings

**Borough** – Gravesham

**Project Value** - £2,000,000



## BURNT ASH ROAD, SE12

### PLANNING MANAGEMENT

**Scheme** – 1 x B1 (Office) unit

**Borough** – London Borough of Lewisham

**Project Value** - £500,000



## HAYDONS ROAD, SW19

### FREEHOLD INVESTMENT

**Scheme** – Investment let to Sainsburys

**Borough** – London Borough of Merton

**Project Value** - £2,000,000



The background of the entire image is a repeating pattern of light gray geometric shapes, specifically stylized chevrons or V-shapes, arranged in a grid-like fashion.

# City & Counties

— Commercial —





[www.cityandcounties.com](http://www.cityandcounties.com)

0207 299 4222

[info@cityandcounties.com](mailto:info@cityandcounties.com)



## HEAD OFFICE

Unit 2

2 Delacourt Road

London

SE3 8XA